

March Schedule

Wednesday, March 4
Pick-Up and Deliver for Loop Night

Thursday, March 5
Hang for Loop Night
AND
Trip to Delaware Art Museum
12:15 Meet in Museum Café for lunch
1:00 Tour the Royal Holloway Collection
with Danielle Rice, Executive Director

Friday, March 6
Loop Night featuring Connie Wahl

Thursday, March 12 - full day
Carolyn Anderson: "Composition in
Landscape" (See back page for details)
Monitors: Anna Bellenger and
Jo Howard

Thursday, March 19 - full day
Paint together at the Studio
(See back page for details)

Thursday, March 26 - full day
Diane Bauer / Phyllis Torres
Acrylic Inks with Imagination
Monitor: Muriel Stauffer

April Schedule

Wednesday, April 1
Pick-Up and Deliver for Loop Night

Thursday, April 2
Hang for Loop Night

Friday, April 3
Loop Night featuring
Kathleen Kreuzberger

Thursday, April 9 - half day
Dan Miller: Critique
Monitor: Maria Keene

Thursday, April 16 - full day
Spring Bus Trip
Arranged by Muriel Stauffer

Thursday, April 23 - full day
Joe Sweeney: Pastels
Monitors: Shirley Lincoln Rigby
and Virginia McCurdy

Wednesday, April 29
Pick-Up and Deliver for Loop Night

Thursday, April 30
Hang Loop Night

Connie Wahl, Featured Artist

Connie Wahl, a Delaware artist, studied painting at Moore College of Art in Philadelphia.

She worked for many years as a commercial artist doing Fashion Illustration for several specialty shops, magazines and newspapers.



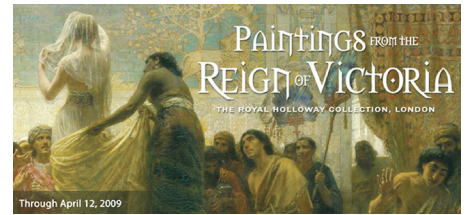
"Meandering Stream," Pastel by Connie Wahl

Connie has worked in a variety of mediums including watercolor, oil, pen and ink, and more recently, pastels. She does portrait painting, landscapes, still life and figure studies.

Connie has traveled extensively and painted in numerous different locations. She taught painting classes for several years in addition to taking many painting workshops. She also studied with Ed Loper, Tom Bostelle, and Domenic DiStefano. Her work can be found in many private collections.



The family of Jean Whitman generously donated Jean's art supplies to the Studio where they were auctioned off. Members were able to purchase fine paper and brushes for a fraction of their original cost. All proceeds were donated to the Studio Group treasury.



Royal Holloway Collection

Sixty of Victorian England's best paintings will be on exhibit at the Delaware Art Museum through April 12, 2009.

Danielle Rice, Executive Director, will give Studio members a private tour on Thursday, March 5. Please see schedule at left for details.

The paintings were acquired by Thomas Holloway and installed in the women's college he founded in 1879, still in operation today. The collection includes scenes of contemporary life, historical events, landscapes, animal studies, and marine subjects. Equating beauty to morality, Holloway believed art could be a teaching tool. Artists represented include Sir Edwin Landseer, William Powell Frith, and Pre-Raphaelite painter Sir John Everett Millais, among many others.

(From Delaware Art Museum Members Newsletter, January/February 2009)



This oil painting of Studio I from the 1940s by Jeanne Sala has been donated to The Studio Group by Lucille Meharg, her daughter.



General Meeting, January 15, 2009

Gate Repair Rescue Team

Thanks to Muriel Stauffer's quick action in contacting the "Fence Guys," we were able to have the gate on the back fence repaired within a few days. The gate blew off its hinges on that windy Feb 12. Thanks, Muriel, and thanks also to Carolyn for fastening the gate temporarily with some kind of wire she found somewhere.

Marian Wilson Update

Nancy James recently spoke with Marian Wilson who is currently in rehabilitation at Kentmere. Nancy reported that Marian was thrilled with the beautiful flower arrangement from the Studio Group members and the many cards and visits she has received. She was overwhelmed with the interest and concern shown by so many members and declared that Studio Group members were "really winners!" That certainly speaks well of our group and is reassuring to all of us that membership in Studio Group pays dividends that go well beyond the ordinary. We hope that Marian continues to do well in her recovery and rehabilitation.

SketchPad Submissions

Publicity date is the 1st of each month.
Submission deadline is one week prior.

Email submissions preferred
mail@sivspurgeon.com

(Images should be high resolution)

Carolyn Anderson Workshop

COMPOSITION IN LANDSCAPE

Please feel free to use any paper, pigments and brushes that you like. After all, color is personal and the application of paint is, or should be, as distinctive as your own handwriting.

PAPER:

Arches 140 lb cold pressed or Fabriano Artistico 140 lb cold pressed.

RED WATERCOLORS

Cadmium Red, Cadmium Scarlet (warm), Alizarin Crimson, Permanent Rose (cool).

YELLOW WATERCOLORS

Cadmium Yellow Pale, Cadmium Yellow, Yellow Ochre, Raw Sienna (warm).

BLUE WATERCOLORS

French Ultramarine, Cobalt (warm), Antwerp Blue, Cerulean (cool).

GREEN WATERCOLORS

Viridian (manufactured by Holbein), Sap Green or Hookers Green.

BROWN WATERCOLORS

Raw Umber, Burnt Umber, Burnt Sienna, VanDyke Brown.

OTHER WATERCOLORS

Paynes Gray, Olive Green (transparent), Blue Gray, Cobalt Turquoise, Jaune Brillant, Lemon Yellow, Chinese White or Pro-White (opaque).



"Christina Gateway,"
Watercolor by Carolyn Anderson

BRUSHES:

Large "Mop," Flats - all sizes (depends on the job), Rounds - all sizes. Carolyn's absolute favorite brush is a Winsor & Newton Series 7 Sable #10 (of course, they are expensive and wear out quickly).

OTHER

Water Container, Clips, Tissue, Sponges (small natural), Masking Tape, Sketchbook, Pencils (2B & 4B) and Photo Reference Material.

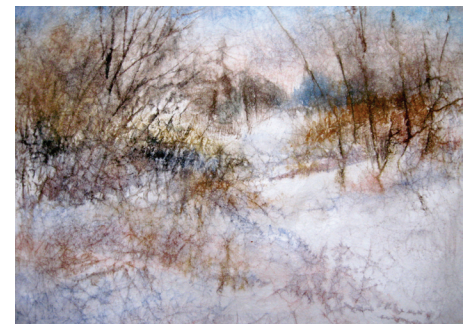
Members' News

Diane Cannon, Erika Neidhardt, Shirley Rigby and Siv Spurgeon are participating in Delaware Valley Art League's 11th Annual Fine Art Sale at Spread Eagle Village in Strafford/Wayne, PA. The exhibit will be open March 22 - March 28, with a Reception to Meet the Artists on Saturday, March 21, 6-8 PM. A total of 60 artists will display all original work.

Maria Keane had two digital pieces accepted in the Delaware Women's Conference. The opening is Friday, March 6, 4-8 PM at the Delaware Art Museum. The exhibition will be open through April 19.

Where East Meets West

Kass Freeman conducted a wonderful and inspirational workshop with Masa Paper, introducing us to the techniques and philosophies of Cheng-Khee Chee.



She crinkled a piece of Masa Paper with reckless abandon and then proceeded to add watercolor to create the beginning of a stunning winter landscape.



Kass used the crinkle pattern as her only drawing tool and adjusted the crinkles to support her vision for the work. She stressed making sure to have paints ready with a creamy consistency, and to re-activate dried paints with a cheap bristle brush, not your fine sables.

March 19th Schedule

Paint together at the Studio with people sharing new ideas, painting with shaving cream, and hearing an update of Gerald Brommer's collage and watercolor techniques. Lunch with no monitor, that is, bring your own lunch and enjoy a fun day together as we paint in our own style or share a new style with other members.