

October Schedule

Friday, October 1

Loop Night featuring Group Show

Wed. Oct. 6, Thu. Oct 7, Fri. Oct. 8

Janet Rogers: Figures and Portraits in Watercolor. Model will be provided.

10/6 Monitors: McCurdy & Rigby

10/7 Monitors: Hollenbeck & Foster

10/8 Monitors: Kreuzberger & Wilson

Tuesday, Oct. 12 & Tuesday Oct. 19

Madeleine Kelly

Pastels over Acrylics

10/12 Monitor: Krackow

10/19 Monitor: Stauffer

Thursday, October 28 - half day

Howard Pyle Day

Panel Discussion

Monitor: Selby & Ruck

NOTE:

Both October programs with Madeleine Kelly are being held on Tuesdays, not Thursdays!

November Schedule

Wednesday, November 3

Deliver for Loop Night

Thursday, November 4

Hang for Loop Night

Friday, November 5

Loop Night featuring Siv Spurgeon

Thursday, November 11

Virgil Carter:

Using Color to Express Mood

Monitor: Mumford

Wednesday, November 17

Deliver and hang for Holiday Open House

Thursday, November 18

Clean and Decorate Studios II and III

Thursday, November 25

HAPPY THANKSGIVING

Friday, November 26

75th Anniversary Open House

4:00 PM - 8:00 PM

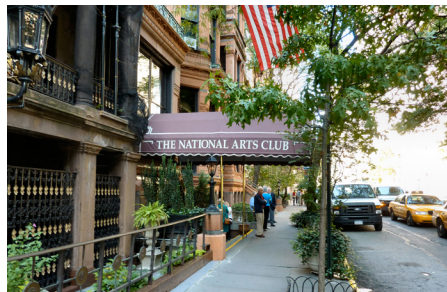
Saturday, November 27

75th Anniversary Open House

11:00 AM - 4:00 PM

NYC Excursion

On Thursday, September 23rd the Studio Group had its bus trip to New York City to view the annual exhibition of the Pastel Society of America at the National Arts Club, and an afternoon at the MoMA.



Many thanks to Kerstin Tyreus for arranging this wonderful trip. Kerstin, along with Shirley Rigby and Ginny McCurdy, also packed bags of food for both our ride there and back home. Thanks also to Muriel Stauffer for the delicious lemon bars!



Adding to the excitement of our day was the fact that the street where we were to meet our bus was blocked off for President Obama's motorcade as it was leaving the UN conference! We were able to meet our bus a couple of blocks away, and our exceptional bus driver was able to get us home earlier than anticipated.



Everyone greatly enjoyed the exhibits, and among the comments heard as we departed the bus was: "Our best trip ever!"

75th Anniversary Open House

Michele Foster and the Publicity Committee are working on advertising for the Studio Group's 75th Year celebration. Michele has made a very generous contribution to begin our promotion.

Ideas for publicizing the party are appreciated. Please direct your ideas to Michele, Pat Zolper, and Charlene Thomforde.

The invitation is in its final stages. The committee needs to know how many invitations each member wants to send to interested friends, family, former buyers. A list will be on the table in the Studio for you to sign up for the number that you need.

Each of you are to address the envelopes for five invitations that the Studio will stamp and mail for you. This should result in at least 150 new addresses to our mailing list, allowing for duplications. If you also know the email address of the addressee, please place a sticky note with the email on the envelope and we will add that address to the email list that is used before each Loop Night.

Remember, this is a party; we are not pushing sales, but our exhibit and "shop" will continue for holiday shoppers through December. We will have Studio II open to the public with refreshments on Loop night December 3rd and on Saturday, December 11.

October Workshops

Any questions about materials or procedures for the Janet Rogers or Madeleine Kelly workshops should be directed to Beth Bobey or Roe Murray.

A materials list for Janet's workshop has already been distributed to all.

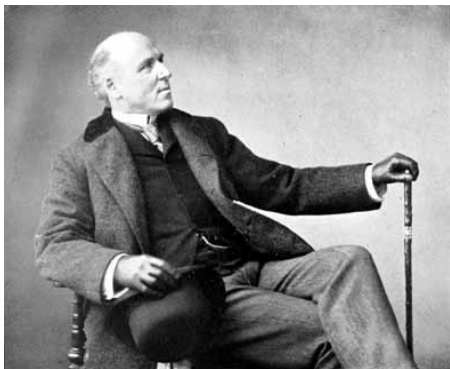
New Address

Please mark your mailing list with the following address change:

Janet Waddell
29 Lonsdale Lane
Kennett Square, PA 19348
610-388-6325

Mr. Pyle Said

Notes of Howard Pyle's Monday Night Lectures, taken by Olive Rush and Ethel Pennewell Brown in 1904, and transcribed by Carolyn Anderson.



Frank E. Schoonover's "Men Unloading Sledge in Mountains"

It seems to me that these men are too large—it may be that they only appear so. Is this line of snow the horizon line? Mr. S. "No—the near distance."

That is not true to nature. If the near distance shows so clearly the farther man would be much more distinct.

But in the driving snow-storm which you have indicated that line of snow would be lost. When I take away that line the men do not seem so large and the sweep of the storm enfolds them.

You and Mr. Arthurs should not fail to bring in these compositions as you have reached the point in your work where your cleverness is in danger of dominating the more imaginative qualities.

Mr. True's "Men in a Bar Room"

This composition is too conscious. It seems to have been arranged. These men might belong to the tome of Daniel Boone and they might be anywhere. A scene should be complete and the surroundings must be vital.

If one were doing a New York street scene one should think of the thunder of the elevated—the noise of the street cars and imagine the tall buildings. One may only suggest it all but it must be vividly imagined.

I recall a bar-room picture of Remington's "Making the Tenderfoot Dance" (by shooting pistols at his feet.) Bad as it is in many ways—it has the vividness of reality.

From the bottle & two glasses on the

roughly built counter one knows just how vile that whiskey is and how the bar-tender on filling the glasses will slip the bottle under the counter so the men will not take drink they haven't paid for.

On looking at this I feel the table has been pulled out in the room by Mr. True and not those men. People instinctively place a table parallel to a wall.

It looks as though you had arranged this table so you could show the figures of three men.

Mr. Edwards: A man in advance of his time coming out of the dark & narrow streets towards the light.

O.R.'s "Teacher and Boy"

In this little dark room the perspective would be short & things appear crowded.

As you sit there the bottom of your skirt appears almost on a line but as I come nearer it takes a rounder form.

O.R.'s Cover

However brilliant your color may be let it be simple floating it over the face & leaving the high lights but not working in half tones.

Rack Cards

Michele Foster has designed a new Rack Card for use in promoting the Studio Group. It will be included in the Welcome Packets sent to new Wilmington area residents by the Mayor's Office. The packet also includes tickets and coupons and information about the Wilmington Art Loop.

Members News

In June 2010, **Doris Davis-Glackin** and **Erika Neidhardt** were awarded Signature Membership in Delaware Watercolor Society.

The Da Vinci Art Alliance has been nominated for a **Barrymore Award** for its collaboration with the Lantern Theater's production of Shakespeare's Henry IV. **Maria Keane** served as a panelist and also participated as an artist with her award winning entry. Awards will be presented on October 4th. Maria is also participating in the Da Vinci Art Alliance exhibition "Seven Deadly Sins" that travels to The Noyes Museum of Art, Stockton College, Hammerton, New Jersey, October 1 through November 24, 2010. She also participated in the regional Juried Art Exhibition at the Rehoboth Art League.

Since joining the Delaware Watercolor Society last September, **Erika Neidhardt** has won Best in Show in the Juried Fall Exhibition, Second Place in the Nassau Valley Vineyards and Winery Exhibition, and Juror's Choice Award in an exhibition in conjunction with the Mispillion Art League.

Marian Wilson had a solo exhibition at The Academy of Life Long Learning at the Library at University of Delaware's campus in the city.

The moment you cheat for the sake of beauty, you know you're an artist.

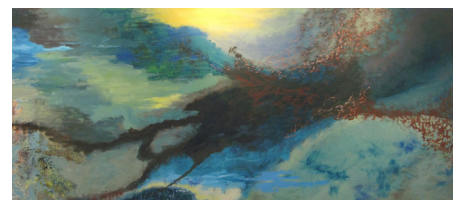
David Hockney

Parking Permit

Thanks to **Nancy James'** efforts, we will be able to park on Wilmington streets without having to move our cars after two hours. To be part of this outstanding program, following information needs to be entered on a list that is distributed to the City of Wilmington: Your name, make and color of car, license plate number and issuing state. The arrangement applies only to Studio hours on Thursdays.

Color Splash

The September Loop Night, featuring Studio III filled with contemporary works by our members, was a huge success. The centerpiece of the exhibit, a mixed media painting titled "Color Splash" by Carol Hixon, Kathleen Kreutzberger and Barbara Selby, is pictured below. "Very refreshing," was the view of several visitors.



SketchPad Submissions

Publishing date is the 1st of each month.
Submission deadline is one week prior.

(High resolution images, please)

Siv Spurgeon, Editor
600 North Swarthmore Avenue
Swarthmore, PA 19081
610-544-1829
mail@sivspurgeon.com