

November Schedule

Wednesday, November 3

Deliver for Loop Night

Thursday, November 4

Hang Group Show for Loop Night

Friday, November 5

Loop Night featuring Siv Spurgeon

Thursday, November 11 - full day

Virgil Carter

Using Color to Express Mood
Monitor: Aileen Mumford

Wednesday, November 17

Deliver and hang New Group Show
for Holiday Open House

Thursday, November 18

Clean and Decorate in
Studios II and III

Thursday, November 25

HAPPY THANKSGIVING

Friday, November 26

75th Anniversary Open House
4:00 PM - 8:00 PM

Saturday, November 27

75th Anniversary Open House
11:00 AM - 4:00 PM

December Schedule

Thursday, December 2 - half day

Member Critique

Friday, December 3

Loop Night

Thursday, December 9 - full day

Deena Ball

Adding Interest to Watercolors
Monitor: Betsy Greer

Saturday, December 11

Holiday Exhibit and Sale
11:00 AM - 5:00 PM

Thursday, December 16

Carolyn Anderson

Monitor: Betty White

Thursday, December 23

MERRY CHRISTMAS

Thursday, December 20

HAPPY NEW YEAR

Siv Spurgeon, Featured Artist



“Out Standing In His Field” is a watercolor of Siv’s father-in-law, standing in a corn field on his Ohio farm.

Siv grew up in Stockholm, Sweden, and moved to the United States in September, 1967. Originally educated as a structural engineer, she spent many years doing construction drawings for architectural firms, first in Sweden and later in the US with Vincent G. Kling & Associates, where she also met her husband Gene.

After the birth of their daughter Berit she went into the interior design field, which in turn led her into the business world of commercial furniture. She eventually joined Knoll, an internationally known office furniture manufacturer, where she stayed for 22 years until her retirement in 2002.

Her professional career was very demanding and it wasn’t until 1993 that she found time to devote to interests outside of work. She started taking classes in watercolor at local art centers and gradually expanded her education in the field of fine arts with classes in human figure drawing at the Pennsylvania Academy of Fine Arts and workshops with favorite watercolor artists across the country.

Siv has earned numerous awards for her work and is very active in the local art community. She is on the board of the Philadelphia Water Color Society where she previously served as president, and she is an elected member of The Artists Circle.

Although much of her work has been devoted to plant material, this exhibit will also include some of her other subject matters.

William Morris and Howard Pyle

Submitted by Pat Zolper

During Pyle’s life span, the influence of William Morris and the Arts and Craft Movement were felt both in Britain and in the United States. William Morris’ ideals and philosophy were presented at the recent Conference, “Useful and Beautiful,” involving the Delaware Art Museum, University of Delaware and Winterthur. We see in both Morris and Pyle the interest in the medieval revival, accentuating craftsmanship and the hand of the artist as an antidote to the commercialism of the industrial revolution.

Pyle’s illustrations of the Arthurian Legends done in pen and ink are outstanding examples. In the same vein both Morris and Pyle used mythology extensively.

What are the visual points we can identify in our Pyle Studios? Pyle described his wish for his studio to be based on “a Tudor cottage”. Comparing our exterior to a diagram of a Tudor Cottage we see the use of stucco, half timbering, narrow windows in multiple groups, steep gables among the features. Inside are the bulls eye windows, the hand forged hinges, the large settee as seen in Studio II or the built in bench in Studio II.

When the Pyle exhibit opens, we will hear more of this from Curator, Margareta Frederick. It was a mind stretching experience for me to attend the Conference and think of it terms of Pyle.

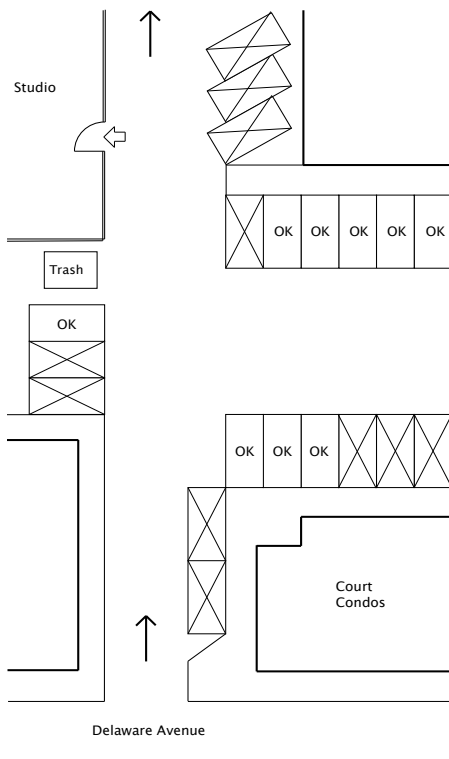


Noteworthy Fact

Margareta Frederick, the curator at DAM and presenter on Howard Pyle Day, is the granddaughter of Elma Frederick, Mrs. Wm., as listed in our list of studio members in the booklet.

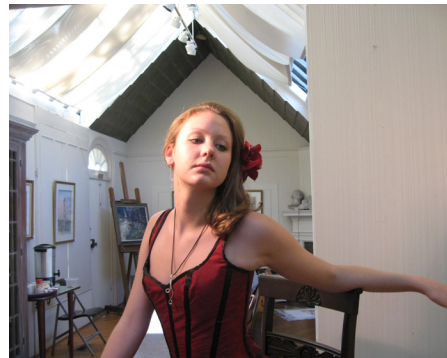
Parking

We have lost another parking place in the back parking lot. Please refer to the revised drawing below. We may only park in those spots marked "OK."



October Workshops

We had two remarkable workshops in October. First we welcomed Janet Rogers back and greatly enjoyed her skill as a portrait painter and all the pointers she gave us about lighting, flesh tones and doing "head cases." The class was especially rewarding thanks to the presence of Alex Thomforde, Charlene's daughter, who tirelessly modeled for us for two days in clothing designed and created by her.



Alex Thomforde strikes her pose.

Later we learned how to create vibrant pastels over acrylic under-paintings from Madeleine Kelly. Her creativity was very inspiring also to those of us new to pastels.

Members News

Diane Cannon received the W. Emerton Heitland Memorial Award at the Philadelphia Water Color Society Anniversary Exhibition of Works on Paper at the Goggle-Works Center for the Arts in Reading, PA.



Diane Cannon with her award winning water-color/acrylic painting "Five Ibis."

Doris Davis-Glackin received the Katherine A. Lovell Memorial Award for Excellence in Watercolor for her painting "Strawberries and Cream" in the 114th Annual Open Exhibition of the Catherine Lorillard Wolfe Art Club at The National Arts Club in New York City.

Maria Keane is exhibiting in the Wilmington University Faculty and Staff Exhibition at the Atrium Gallery, Peoples' Building, New Castle Campus. The exhibit is open until December 9, 2010.

75th Anniversary Reminders

Kathy is typing up the distribution list for the Rack Cards. Each member is to sign up to place cards at one or two places, and to check when they need refurbishing. There will be new Rack Cards in January. The present one advertises our Open House and holiday sales dates.

Your 5 addressed invitations to the Open House are due to be stamped and mailed by the Studio on Wednesday, November 3rd (same day that paintings for the Nov. Loop are due). Please rubber band the invitations together and put a note with their email addresses and your name on top.

Refreshments are needed for the Open House and the Holiday Sale on December 11th. See article below. With our new refrigerator and freezer, you may want to deliver early. If so, please label.

75th Anniversary Hosting

Submitted by Carol Hixon

With everyone's cooperation we can share the work, enjoy the parties and be as creative as we are willing. A sign up list will be passed around as usual, but please start thinking about what you would like to bring and be ready when the list comes around.

SWEETS: Cookies, candies, small cupcakes, bars, brownies, sweet breads.
SAVORY ITEMS: Tea sandwiches, cheese spreads or other knife-spreadable items, cheese and fruit trays, marinated or pickled items to be speared with toothpicks, savory pastries, anything which will keep safely for a few hours on the table or served on ice, nuts, party mixes and munchies, crackers, etc. No dips please. Foods which can be warmed in the microwave would also be good.
BEVERAGES are also welcome.

For those of you who do not wish to contribute food, it would be very helpful to have a cleanup person who arrives about 15 minutes before closing to do the dishes, put food away, and clear tables.

Please contact Carol with questions.

Thank You

The Community Newspaper Ad is due to the generosity of **Michele Foster**. Thank you, Michele.

We thank **Doris** and **George Glackin** for their generous donation of time and materials in framing for many of our studio needs.

Helen Farr Sloan Award



Joyce Eesley's painting "White Flower Medley" won the Helen Farr Sloan Award given by the Studio Group at Howard Pyle Studios at the Philadelphia Water Color Society's 110th Anniversary Exhibition.

Donation

Aileen Mumford donated a painting by Jeanette Slocomb Edwards entitled "Along the Shellpot Woods." Jeanette, one of the original members of the Studio Group, has a well established reputation as a visual artist and a poet.

The painting represents an important addition to the recorded history of the Studio Group, Inc. The painting will be framed and added to our permanent collection.